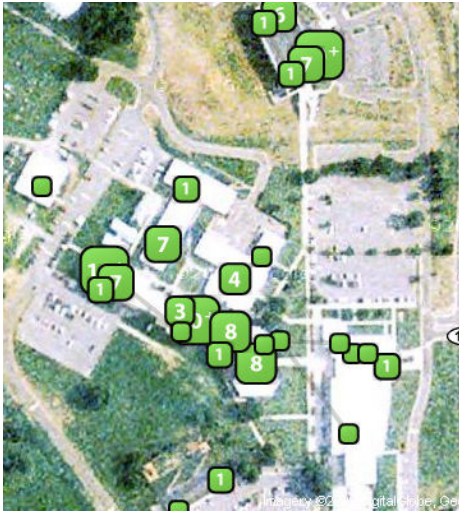




## **Approach Communications provides WiFi Internet services for Nash Community College.**

Approach Communications, the leading provider of wireless broadband solutions and managed WiFi systems recently completed covering the campus of Nash Community College in WiFi for student access.



Approach Communications configured and installed over twenty seven high powered Meraki 2.4GHz access points along with four sets of Deliberant 5.8GHz backhaul links thus covering the entire campus with wireless connectivity for its students.

With the comprehensive management system involved, NCC staff can control users, manage bandwidth and display important messages and announcements for the student body. They can also create reports based on users and which access points are generating the most traffic.

Mitch Evans, NCC's Network Administrator had this to say, "Our campus went from "not hot spot" to "hot spot" in less than 3 days. The Meraki solution has not only been very cost effective, but it has taken a lot of stress off of our primary campus network as well as myself. The solution has been very easy to manage and we have not had any issues with the system even after power outages, the alerts and real-time dashboard let's you know everything about the health of your wireless solution. We love it and our budget people love it even better!!! The installation went great and the staff was very knowledgeable and courteous. We covered our "entire" campus for less than half of what our alternative solution would be. I would recommend this to anyone that is searching for a dependable, economical wireless solution."

Approach Communications is a leading provider of customized wireless broadband solutions and services. The Company owns and operates the City Port WiFi network in Wilmington, NC and provides high speed wireless solutions for condos, resorts, municipalities, schools, business and other organizations. Contact Approach by calling 877-364-5907 or by email at [info@approach.net](mailto:info@approach.net).